

1. FLORA & FAUNA

Perennial favourites in fine jewellery, both stylized and realistic, are those that evoke the natural world. For 2015, the most prevalent nature-inspired themes are flowers and butterflies, followed by birds, bees, snakes, and creatures of the deep. Yet, don't count out the many frogs, cats, dogs, horses, spiders, and jungle animals that make up part of this year's bejeweled Flora and Fauna.

By Cynthia Uminayar



Aaron Basha



Alishan

Gumuc



Jacob & Co.



Oscar Heyman



Bizzotto Gioielli



Misi



Outfit by Roberto Verino (photo: Mercedes Benz Fashion Week Madrid)



Monplaisir



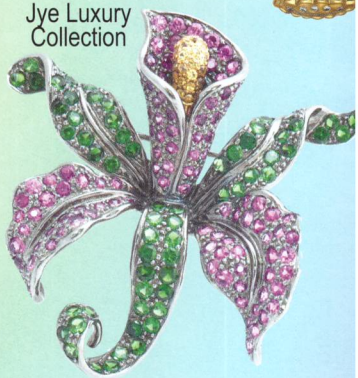
GianaMayra



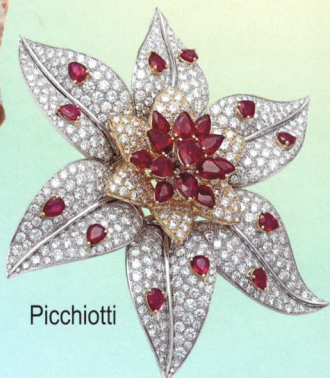
Staurino



Alessio Boschi



Jye Luxury Collection



Picchiotti



Jewelmer Joaillerie



Sorellina



Katherine Jetter



TTI